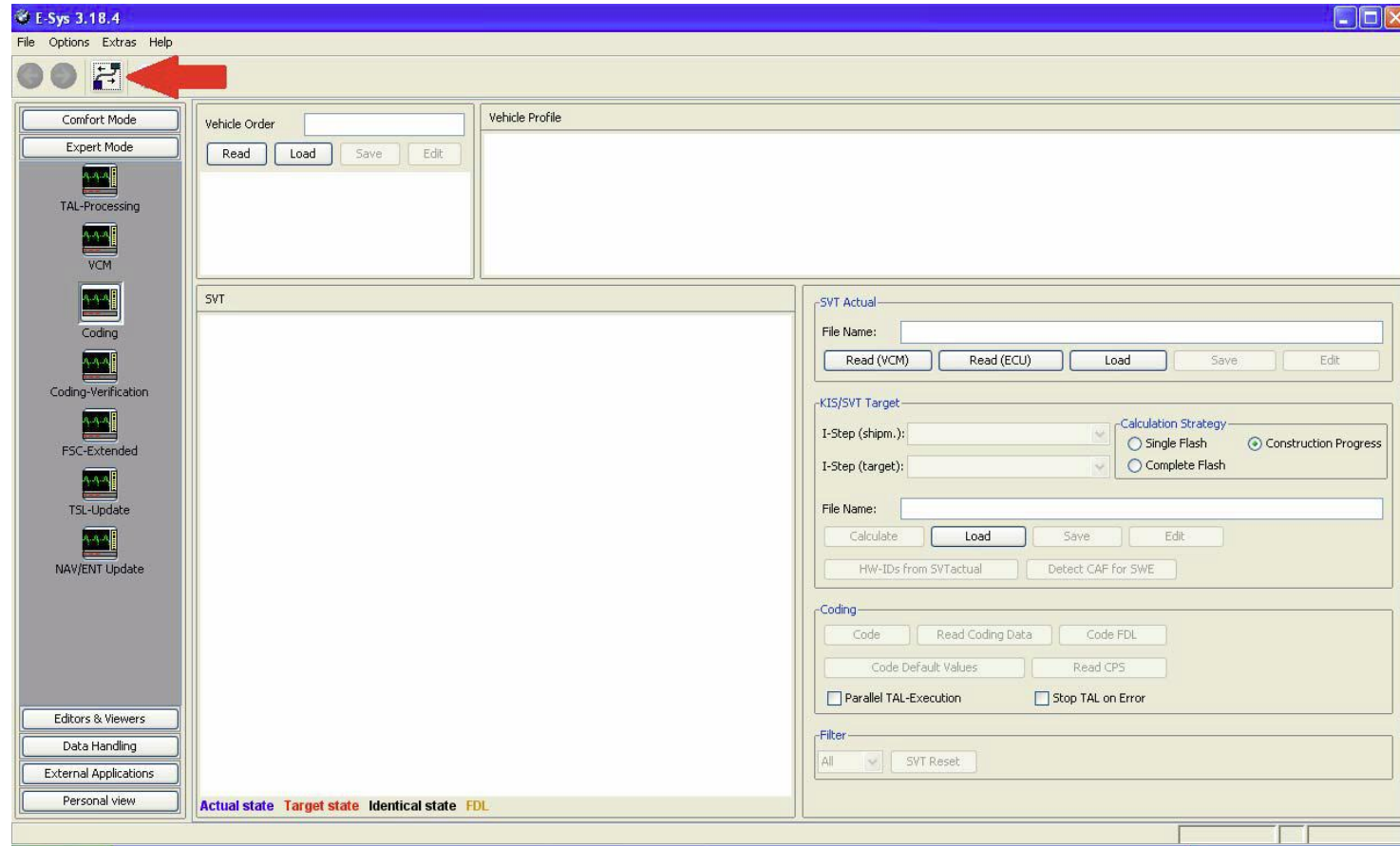


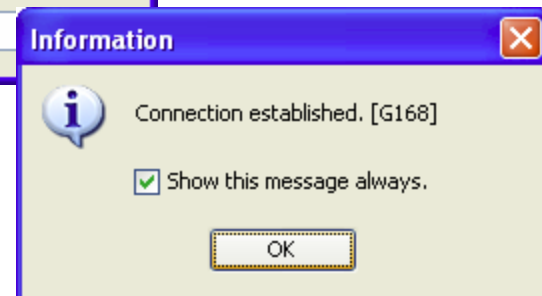
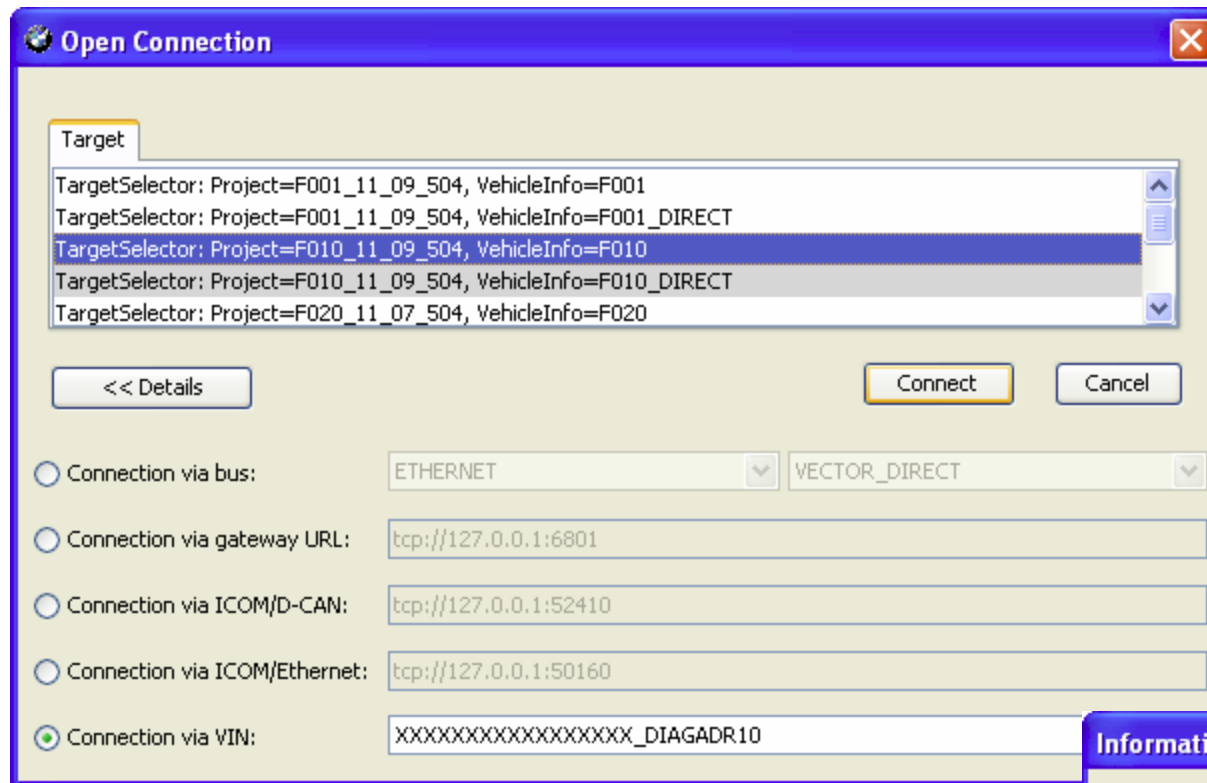
Getting Started with E-Sys 3.18.4

- Connect ENET cable between car's OBD port and network port of laptop.
- Ensure laptop WiFi is disabled and all cell phones near car have BT turned off.
- Start the engine or provide external power.
 - It is safe to run the engine as long as you are not coding in the Digital Motor Electronics (DME) ECU.
- Wait a minute until the network icon on laptop shows a Connection with the yellow exclamation point over it.
- Open E-Sys.

Press the connect button on top row of E-Sys to connect car with the laptop. This will open a popup dialogue box.



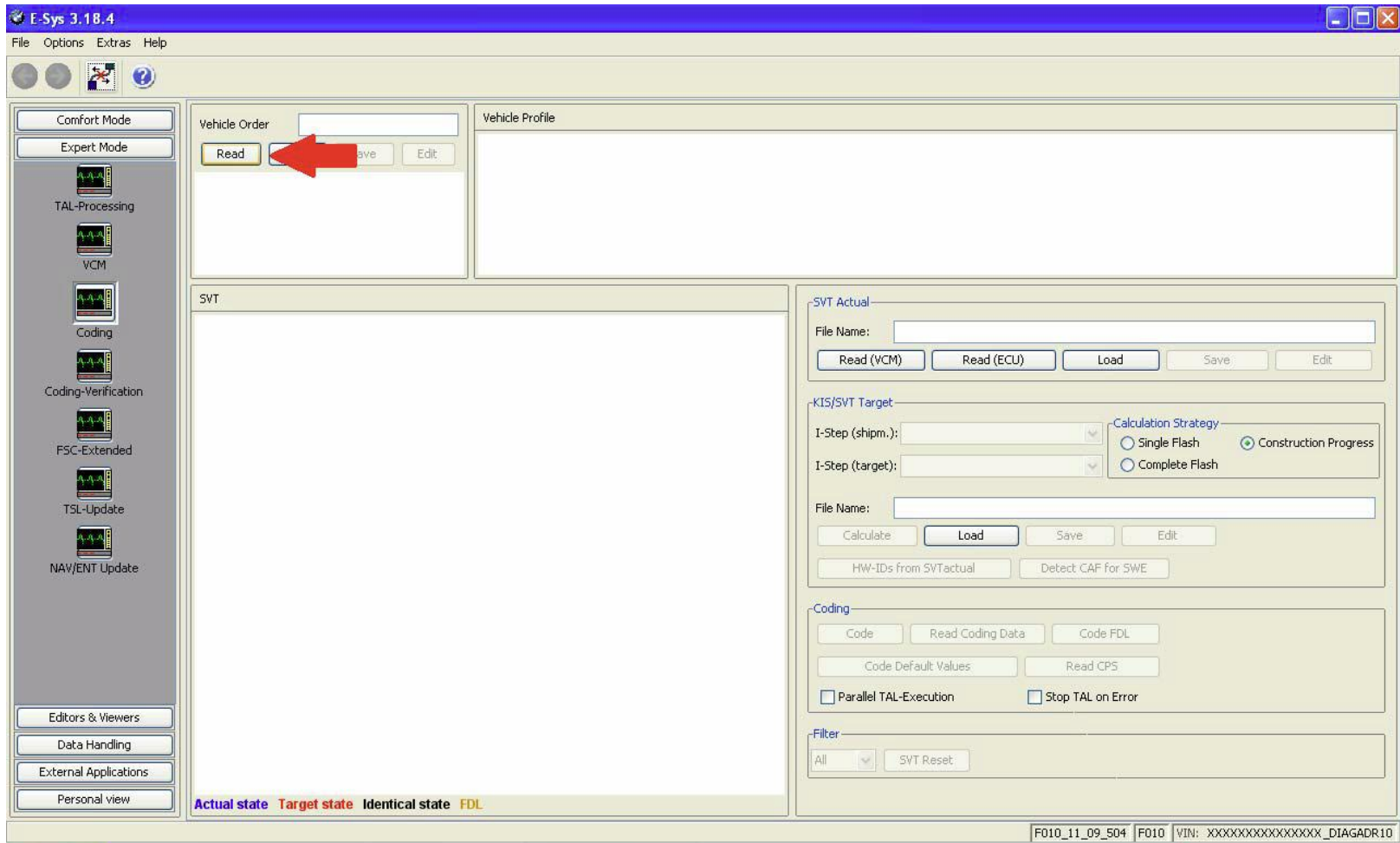
Select the correct TargetSelector, e.g. F010, not F010_DIRECT
Select "connection via VIN" and press Connect.
Click Ok when connection established.



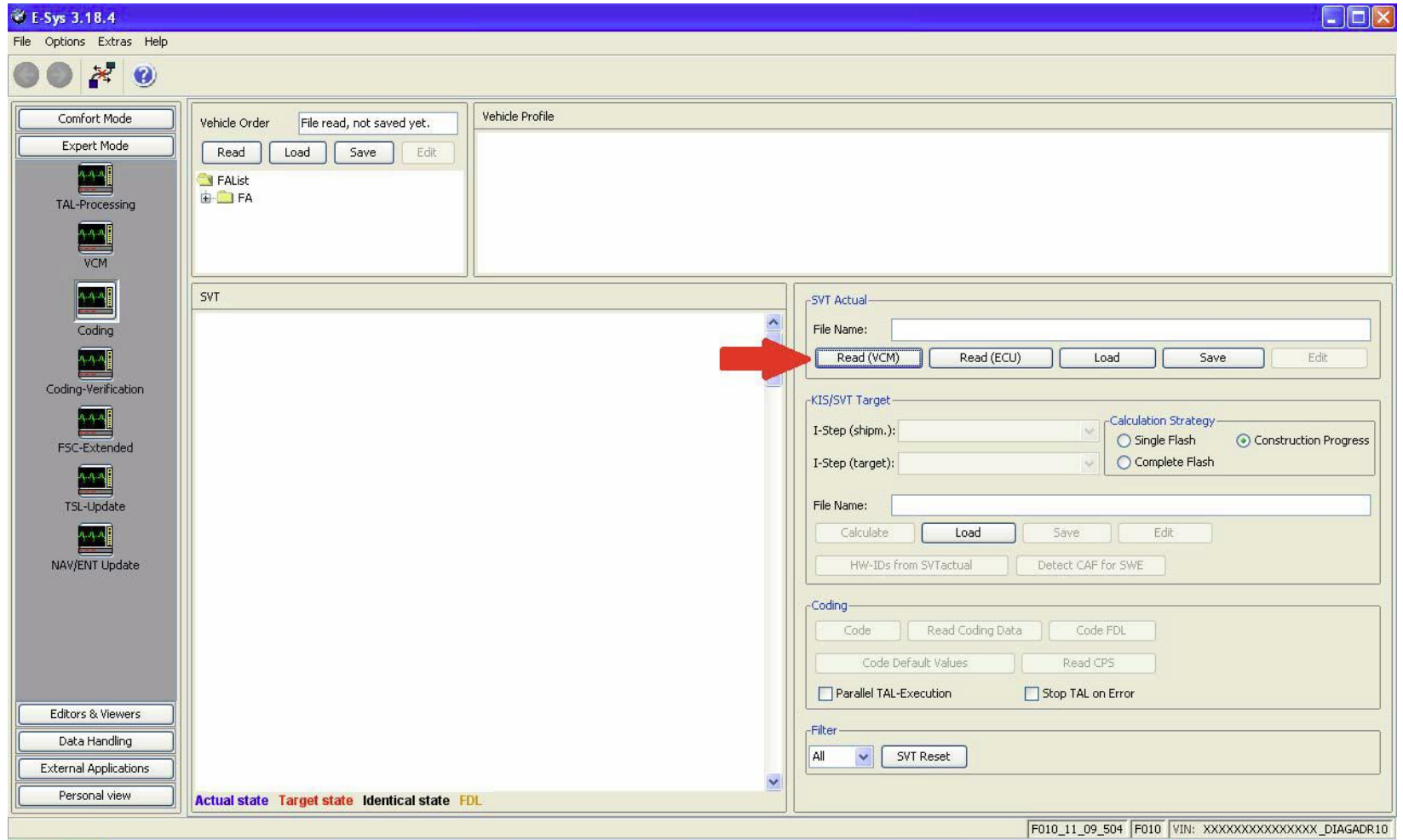
Select "Expert Mode".

click on "Coding" button.

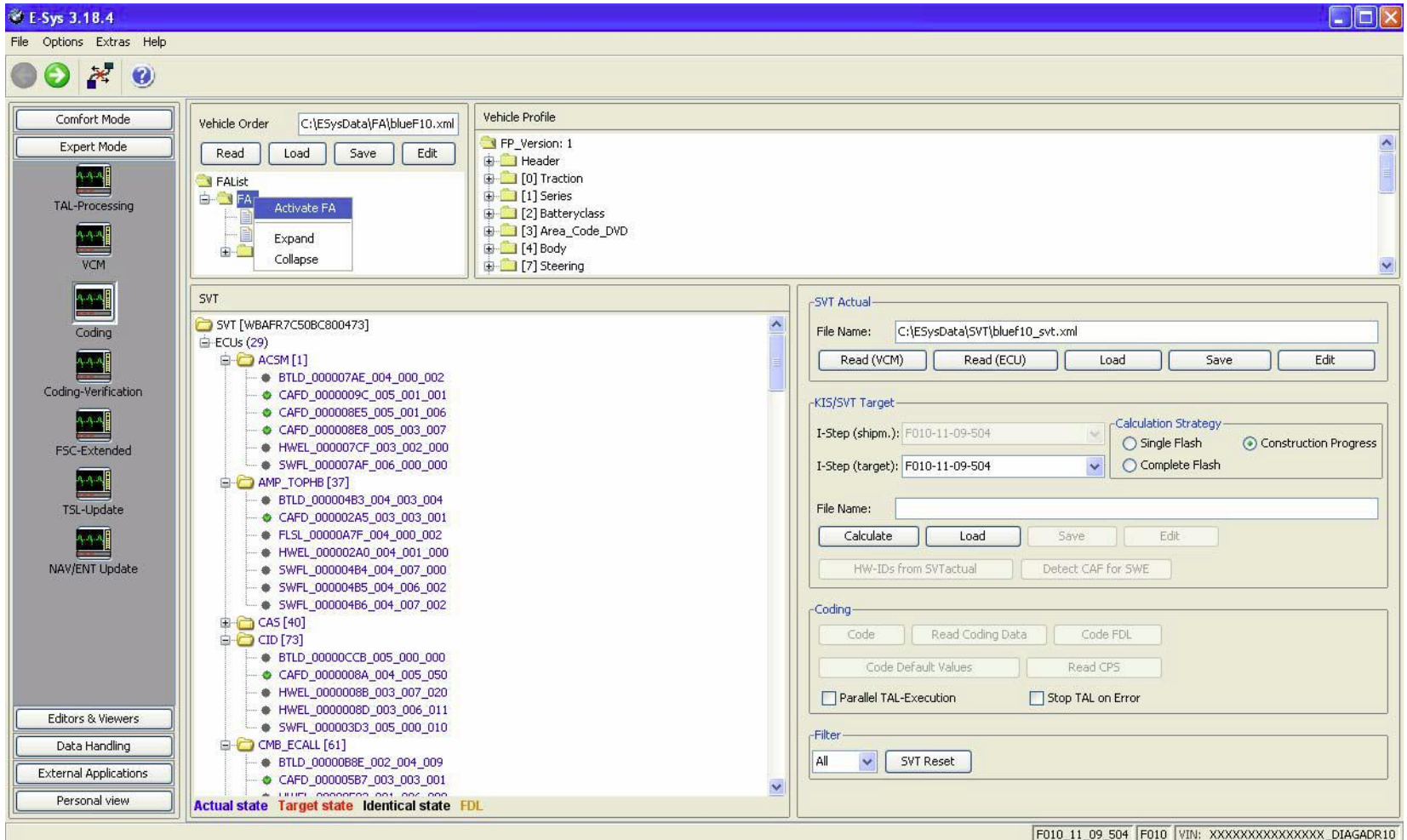
In Vehicle Order Box, click on "Read" button. This will display the car's FA .



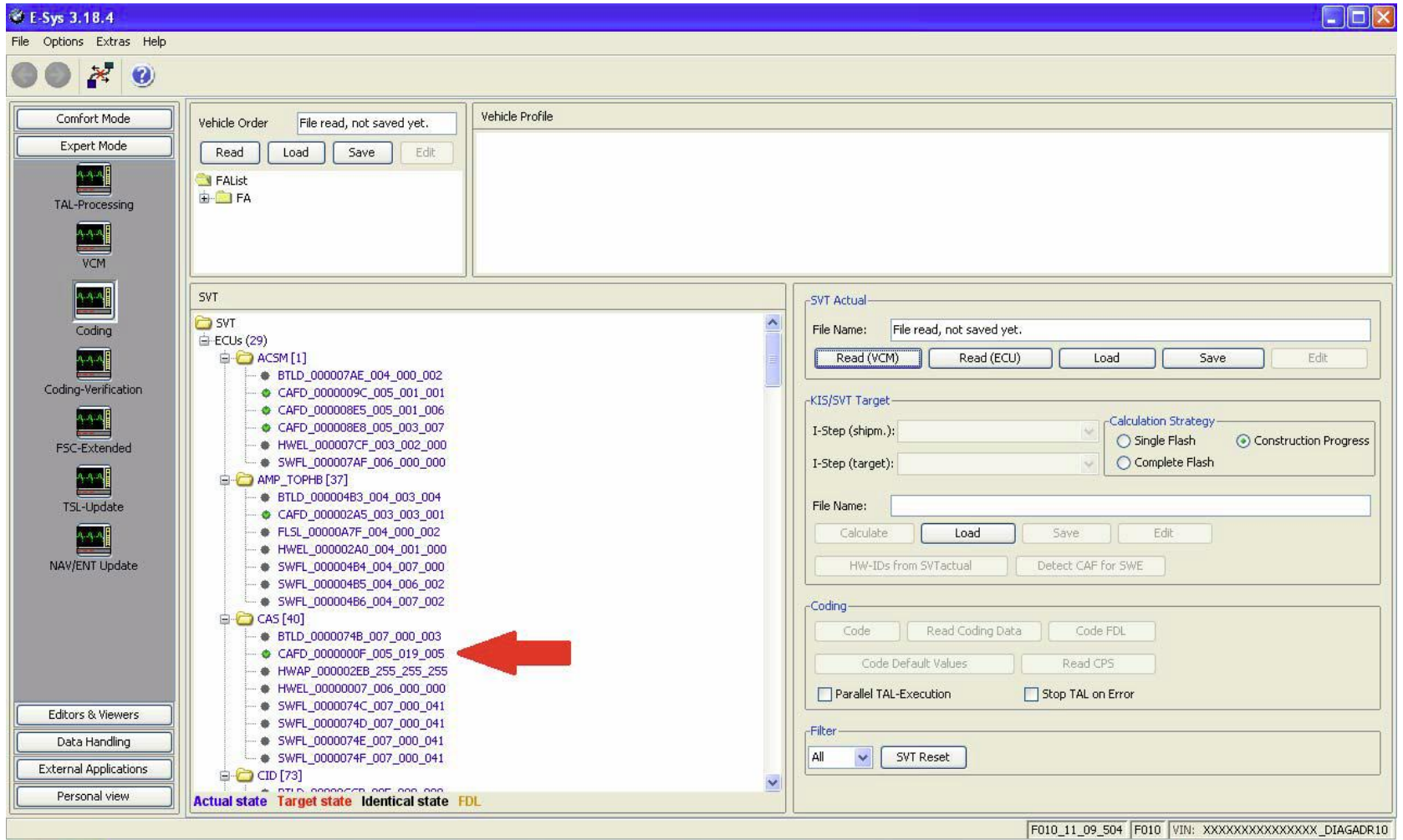
In the SVT Actual Box click on "Read(VCM)" button.
The SVT box will display the car's different modules.



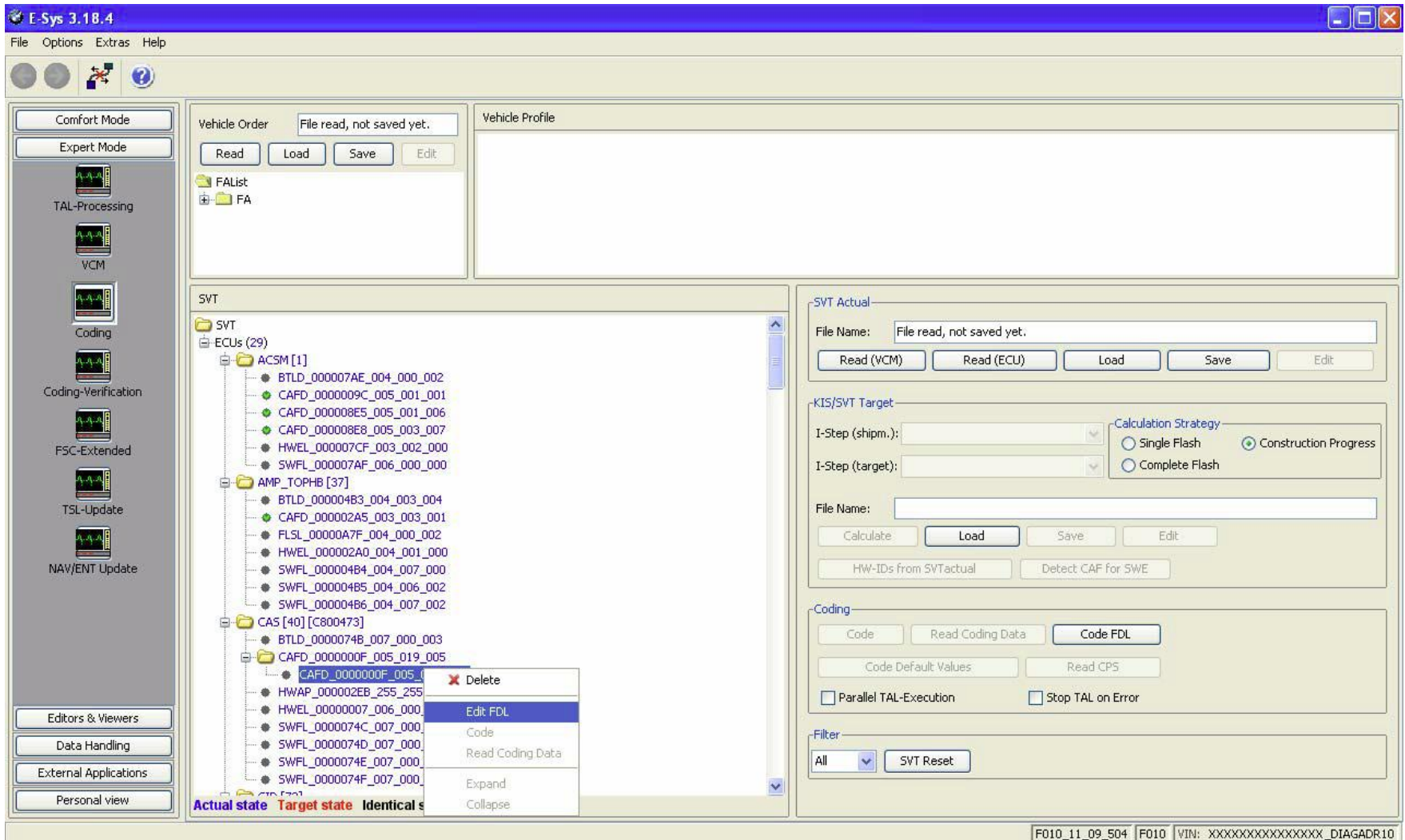
Right click FA Select Activate FA



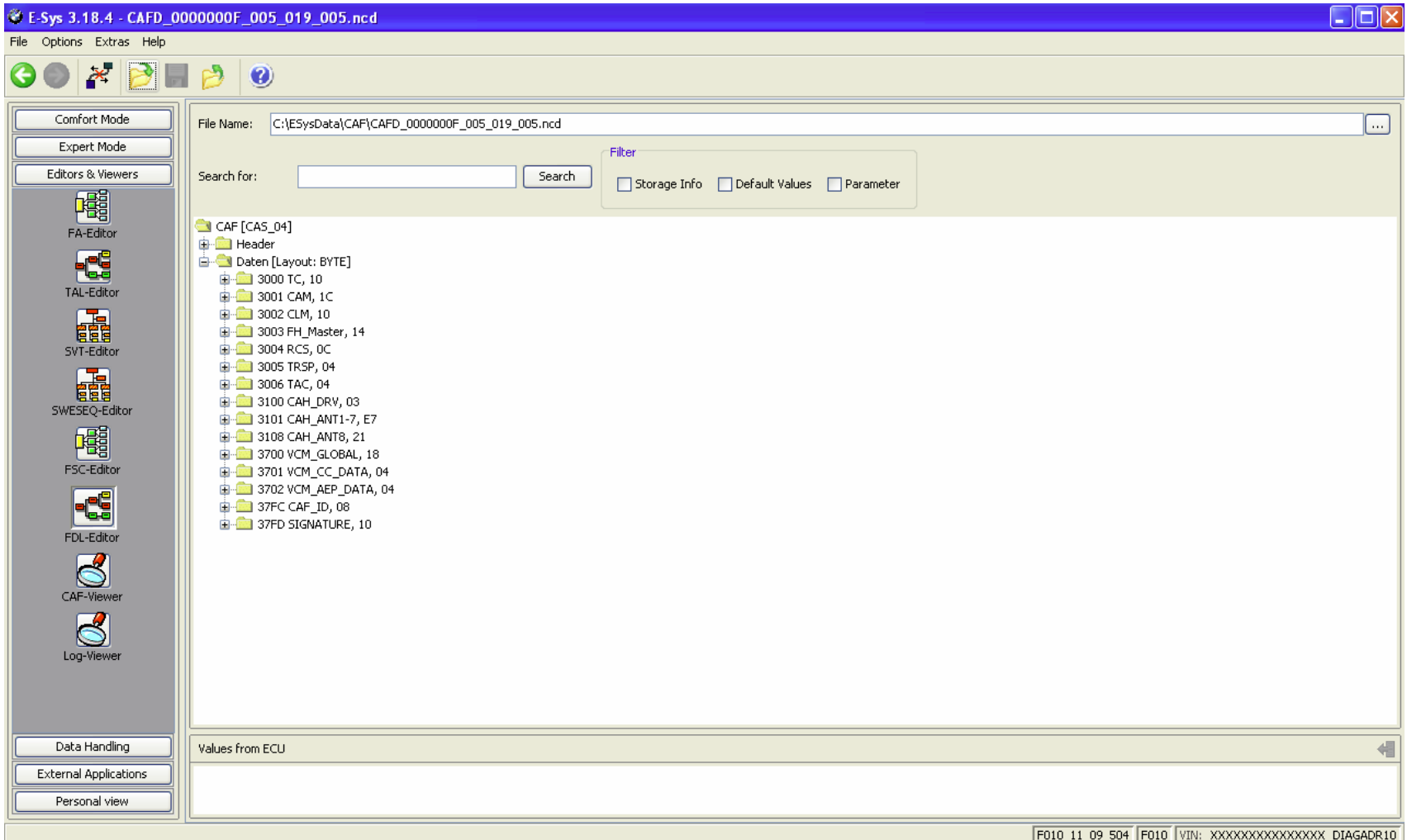
Right click the CAFD file under the Module you want to read.
Select "Read Coding Data"



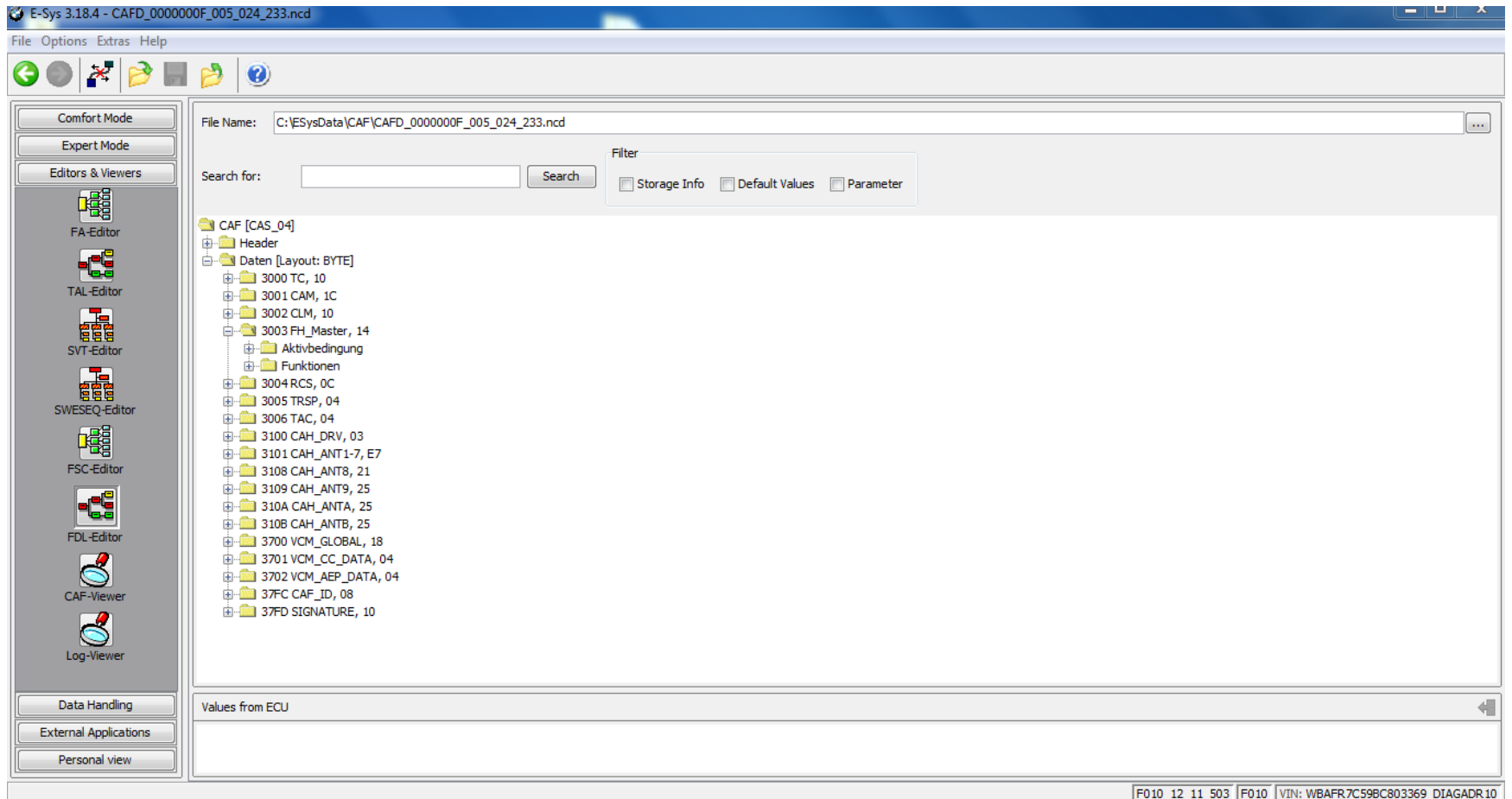
A new option will appear under the CAFD folder.
Expand to view the new folder by clicking “+”.
Right click that new folder, Select “EDIT FDL”



Select the Section you wish to modify.
Expand to view the section's folder by clicking "+".



Expand the “Funktionen” folder by clicking “+”.
This will expand the folder into a list of Function Values.



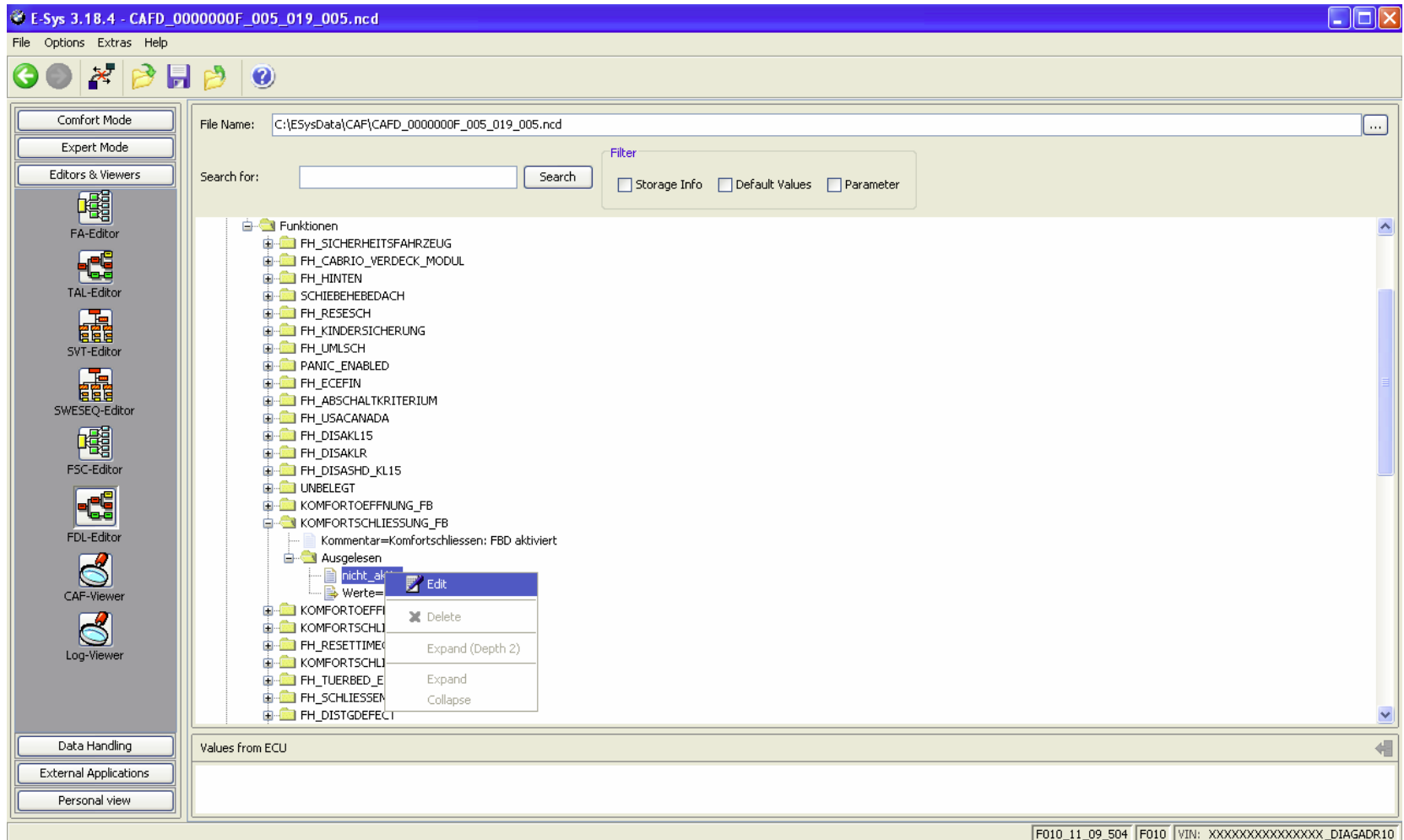
Locate the Function Value that you want to configure

Expand to view the folder by clicking “+”.

Select the second option (Ausgelesen)

Expand to view the folder by clicking “+”.

Right click on Aktiv or Nicht_Aktiv, select Edit



Change setting as desired (in this case “Aktiv”)

The screenshot shows the E-Sys 3.18.4 software interface. The title bar reads "E-Sys 3.18.4 - CAFD_0000000F_005_019_005.ncd". The menu bar includes "File", "Options", "Extras", and "Help". The left sidebar contains several tool buttons: "Comfort Mode", "Expert Mode", "Editors & Viewers", "FA-Editor", "TAL-Editor", "SVT-Editor", "SWESEQ-Editor", "FSC-Editor", "FDL-Editor", "CAF-Viewer", "Log-Viewer", "Data Handling", "External Applications", and "Personal view".

The main workspace displays the file path "C:\EsysData\CAF\CAFD_0000000F_005_019_005.ncd". Below the path is a search bar and a "Filter" section with checkboxes for "Storage Info", "Default Values", and "Parameter".

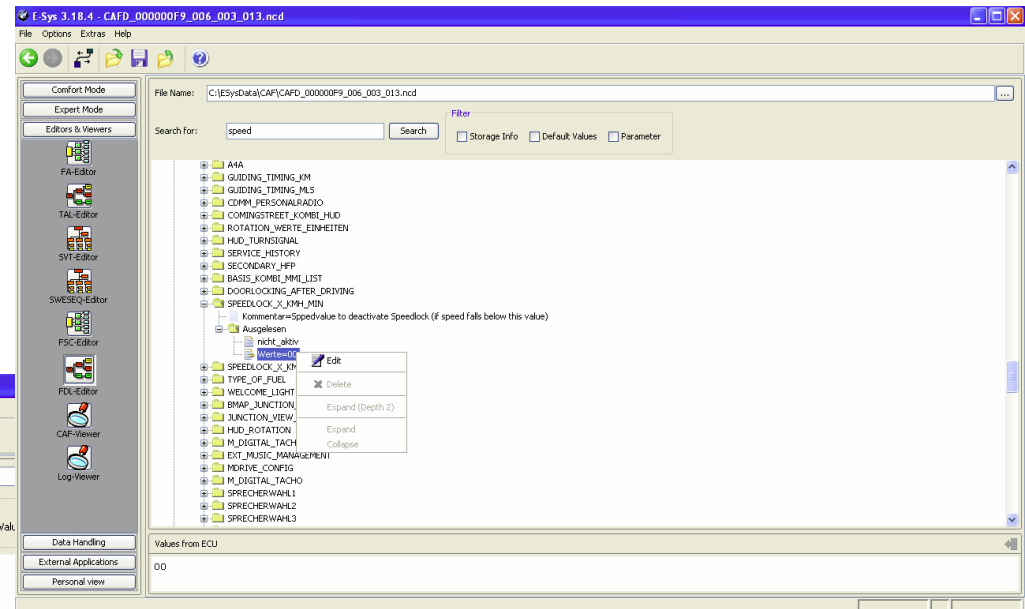
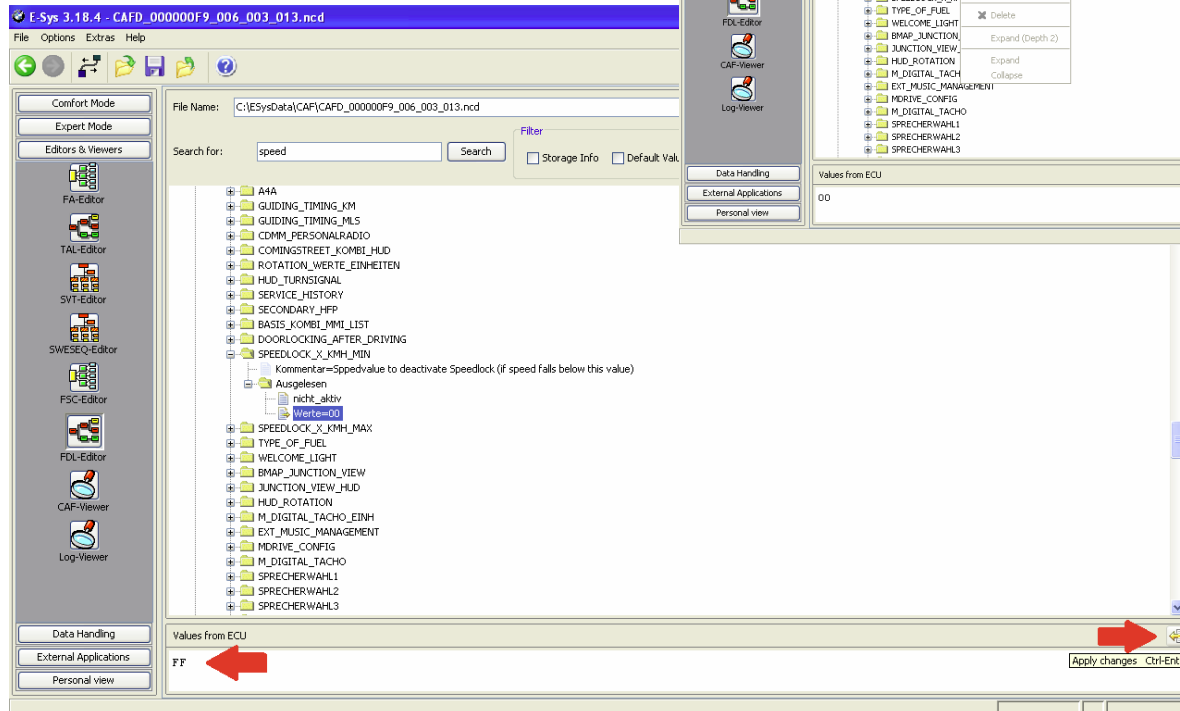
The file tree shows a folder structure under "Funktionen". The "Ausgelesen" folder is expanded, showing a dropdown menu with "nicht a..." and "nicht_aktiv". The "KOMFORTaktiv" folder is selected and highlighted in blue.

At the bottom of the interface, there is a "Values from ECU" section. The status bar at the very bottom displays "F010_11_09_504 | F010 | VIN: XXXXXXXXXXXXXXXX_DIAGADR10".

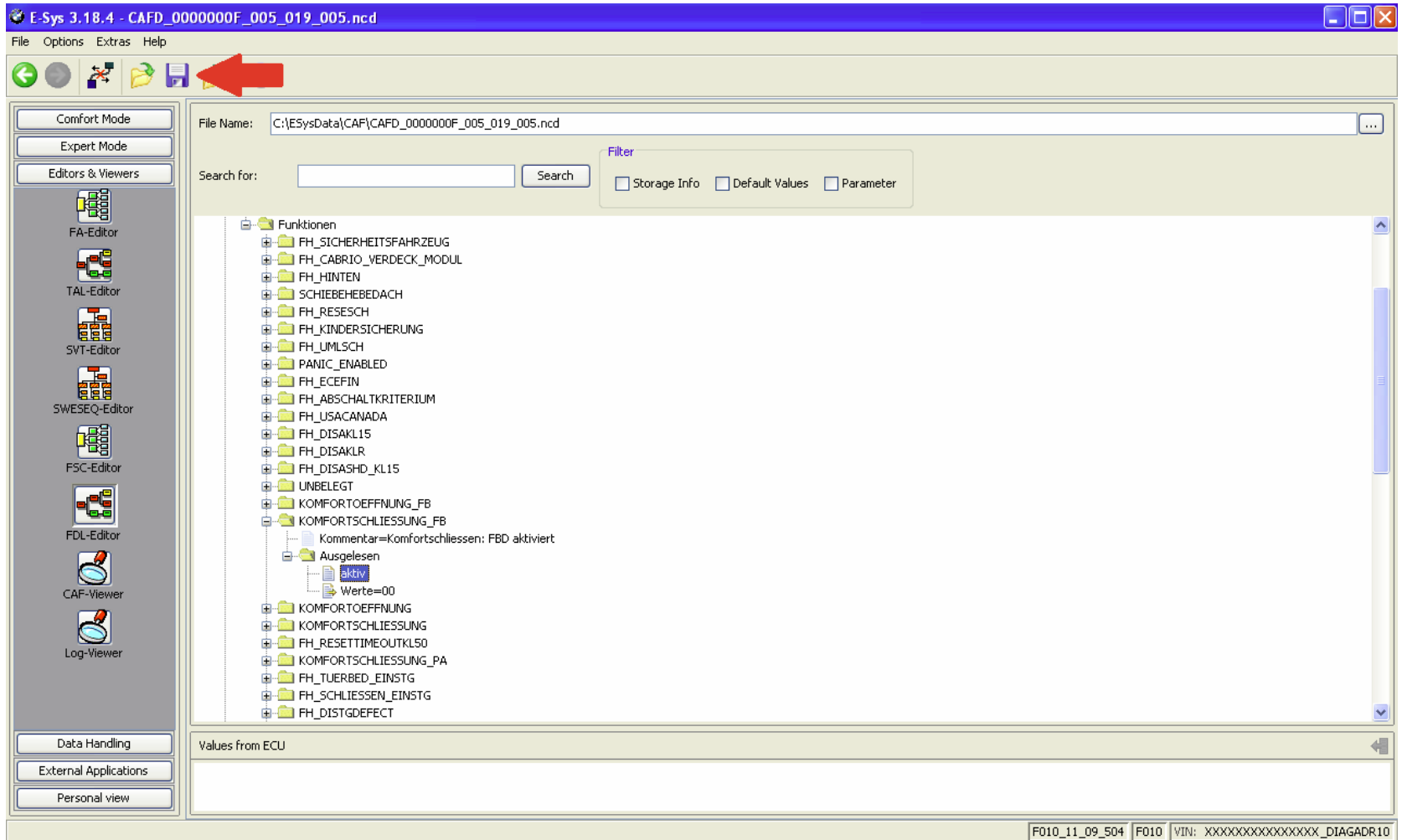
ONLY IF WERTE VALUE NEEDS TO BE CHANGED (normally NOT done, and never in combination with change to aktiv, nicht_aktiv. Only one of the two settings changes)

First,
Right click on Werte, select Edit

Then,
Enter new value in “Values from ECU” box
Select Apply Changes



Click on the “Save” icon



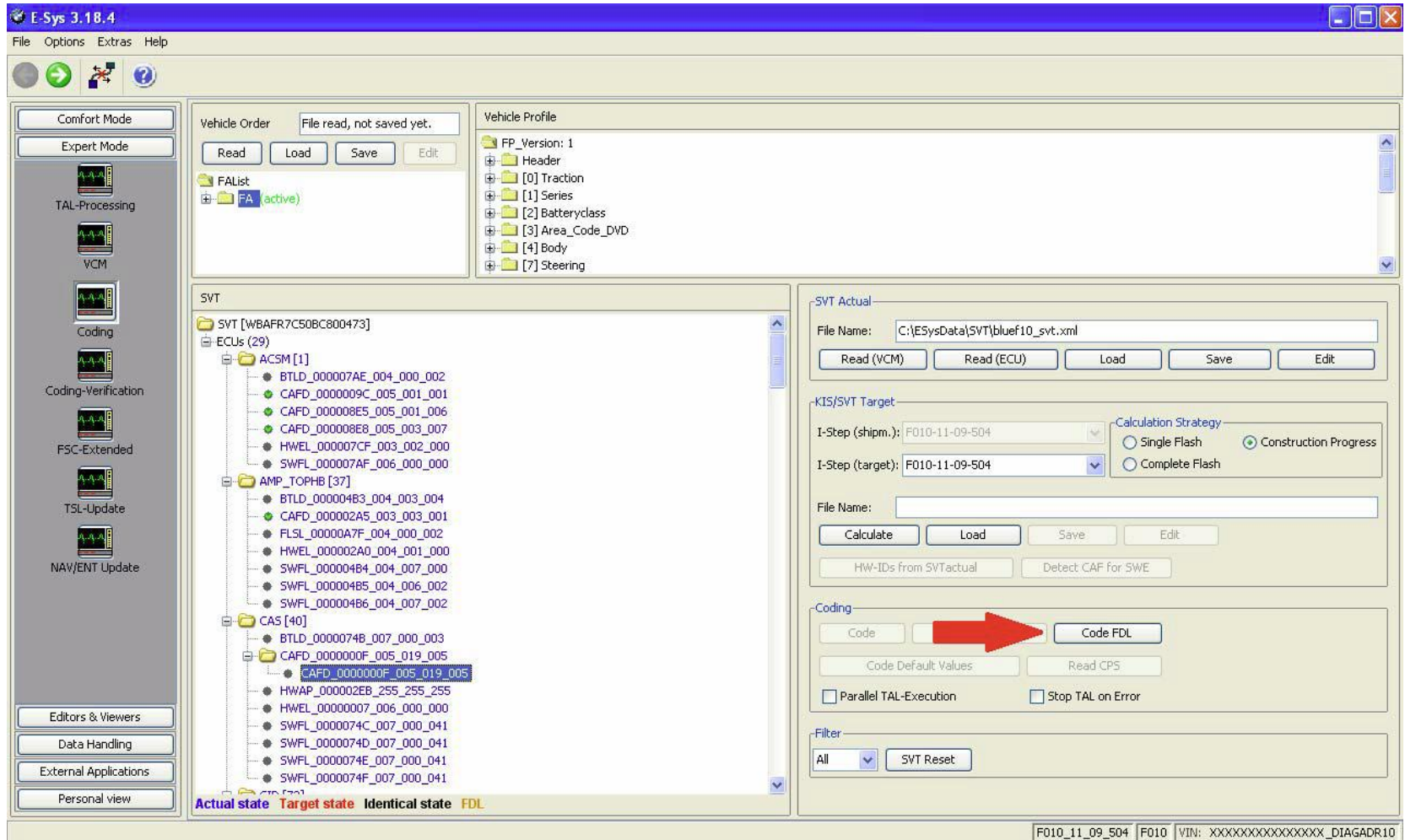
Click the green back arrow

The screenshot shows the E-Sys 3.18.4 software interface. The title bar reads "E-Sys 3.18.4 - CAFD_0000000F_005_019_005.ncd". The menu bar includes "File", "Options", "Extras", and "Help". The toolbar contains several icons, with a red arrow pointing to the green back arrow icon. The left sidebar has buttons for "Comfort Mode", "Expert Mode", "Editors & Viewers", "Data Handling", "External Applications", and "Personal view". The "Editors & Viewers" section lists various editors: FA-Editor, TAL-Editor, SVT-Editor, SWSEQ-Editor, PSC-Editor, FDL-Editor, CAF-Viewer, and Log-Viewer. The main area displays the file tree for "C:\ESysData\CAF\CAFD_0000000F_005_019_005.ncd". The tree structure is as follows:

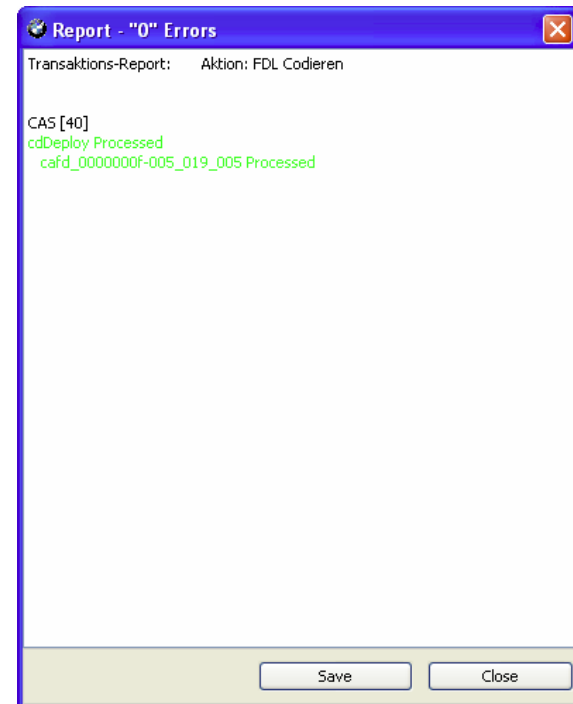
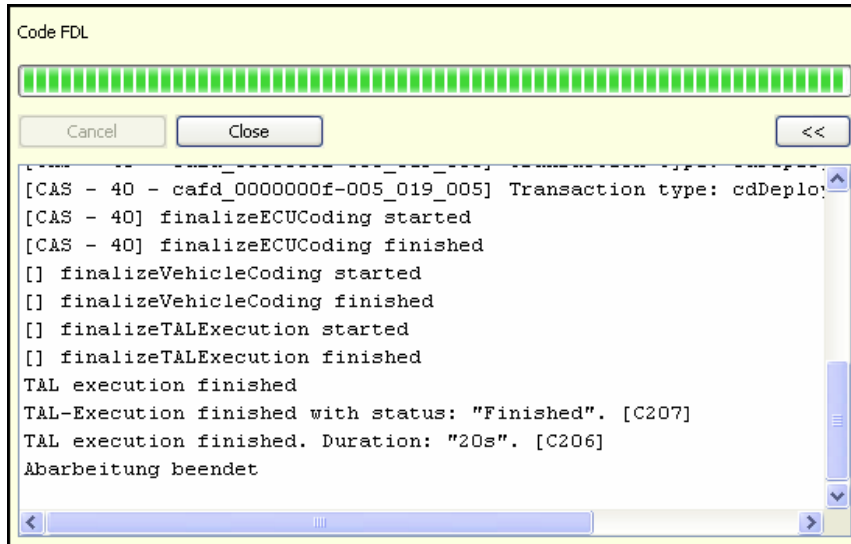
- Funktionen
 - FH_SICHERHEITSAHNRZEUG
 - FH_CABRIO_VERDECK_MODUL
 - FH_HINTEN
 - SCHIEBEHEBEDACH
 - FH_RESECH
 - FH_KINDERSICHERUNG
 - FH_UMLSCH
 - PANIC_ENABLED
 - FH_ECEFIN
 - FH_ABSCHALTKRITERIUM
 - FH_USACANADA
 - FH_DISAKL15
 - FH_DISAKLR
 - FH_DISASHD_KL15
 - UNBELEGT
 - KOMFORTOEFFNUNG_FB
 - KOMFORTSCHLIESSUNG_FB
 - Kommentar=Komfortschliessen: FBD aktiviert
 - Ausgelesen
 - aktiv
 - Werte=00
 - KOMFORTOEFFNUNG
 - KOMFORTSCHLIESSUNG
 - FH_RESETTIMEOUTKL50
 - KOMFORTSCHLIESSUNG_PA
 - FH_TUERBED_EINSTG
 - FH_SCHLIESSEN_EINSTG
 - FH_DISTGDEFECT

The status bar at the bottom right shows "F010_11_09_504 | F010 | VIN: XXXXXXXXXXXXXXXX_DIAGADR10".

Select the CAFD file that you just edited
Click "CODE FDL"



When coding is complete, click “Close”
An error report will open. Close or Save as needed.



Repeat steps as needed

When complete, disconnect, then exit E-Sys